

Note: For Parcel Data and Curve Data
See Sheet Number "13-2"



Station Relation
Sta 104+84.10 Elm Rd =
Sta 50+00.00 Exist. Rose Rd.

Station Relation
Sta 104+84.10 Elm Rd =
Sta 50+00.00 Exist. Seymour Rd East

Station Relation
Sta 113+13.18 Elm Rd =
Sta 56+47.25 Future Rose Hill Rd

Station Relation
Sta 928+79.43 Old Rose Hill =
Sta 39+83.14 Future Rose Hill Rd

Station Relation
Sta 103+00.42 Elm Rd = 50' Lt of
Sta 3+00.42 Future Ramp "D"

Station Relation
Sta. 113+13.18 Elm Rd =
Sta. 0+00.00 Future Seymour Rd East

Station Relation
Sta. 107+35.00 Elm Rd =
Sta 0+00.00 Future Ramp "A"

Station Relation
Pt. Sta. 27+99.24 Future Seymour Rd East =
Sta 75+44.07 Exist. Seymour Rd East

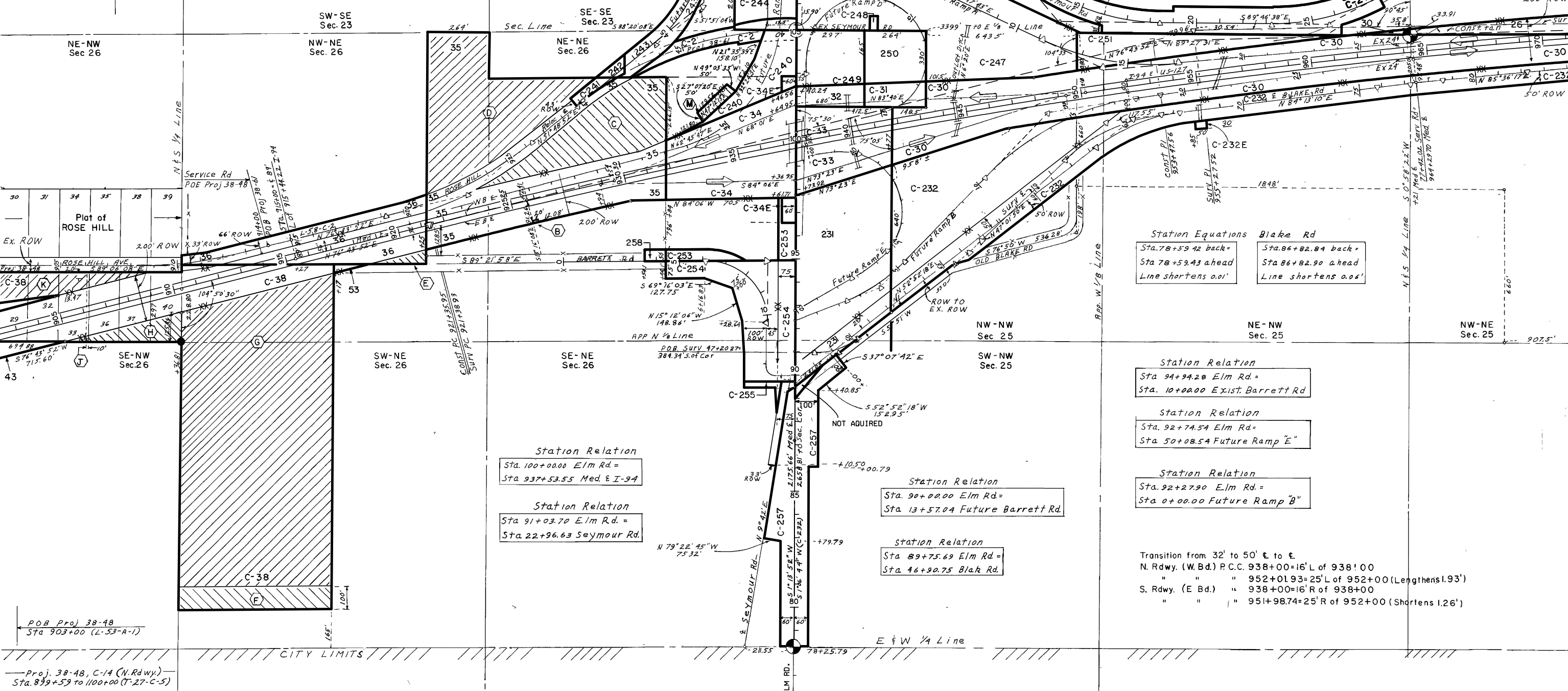
Station Equations Blake Rd
Sta. 78+59.42 back = Sta. 86+82.84 back =
Sta 78+59.43 ahead Sta 86+82.90 ahead
Line shortens 0.01' Line shortens 0.06'

Station Relation
Sta 94+94.28 Elm Rd =
Sta. 10+00.00 Exist. Barrett Rd

Station Relation
Sta. 92+74.54 Elm Rd =
Sta 50+08.54 Future Ramp "E"

Station Relation
Sta. 92+27.90 Elm Rd =
Sta 0+00.00 Future Ramp "B"

Transition from 32' to 50' E to E
N. Rdwy. (W. Bd.) P.C.C. 938+00=16'L of 938+00
" " " 952+01.93=25'L of 952+00 (Lengthens 1.93')
S. Rdwy. (E Bd.) " 938+00=16'R of 938+00
" " " 951+98.74=25'R of 952+00 (Shortens 1.26')



POB Proj 38-48
Sta 903+00 (L-53-A-1)

Proj. 38-48, C-14 (N. Rdwy.)
Sta. 899+59 to 1100+00 (T-27-C-5)

CITY LIMITS

RIGHT-OF-WAY MAP				
DRAWN BY:	WILCOX	CHECKED BY:		
LAST REVISION DATE:	09/20/2002	ROUTE:	PROJ/JOB#:	CONTROL SECTION:
COUNTY:	JACKSON	US-727	38-48	38101
FILE NO.:	38-R-2		38-61	13-1